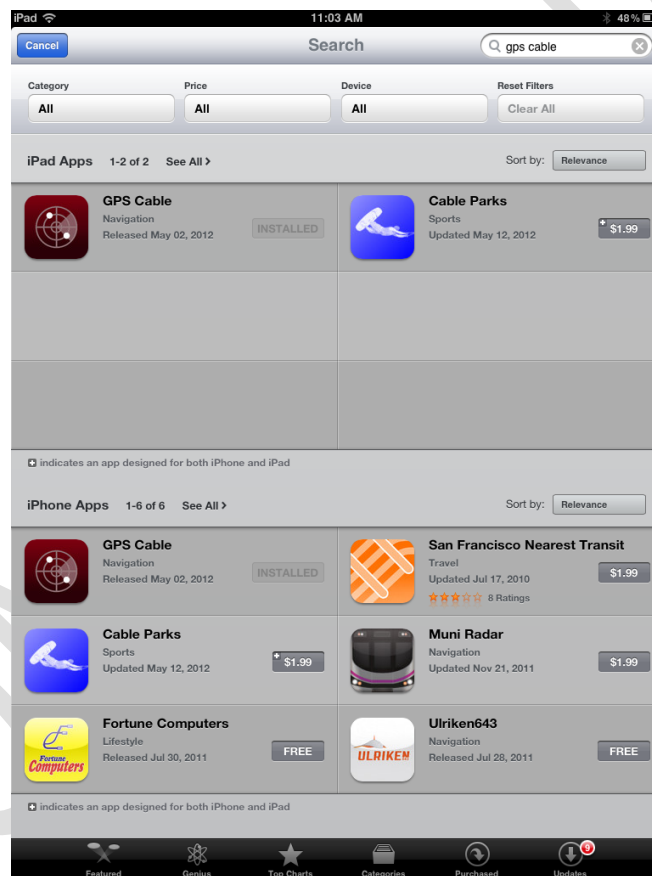


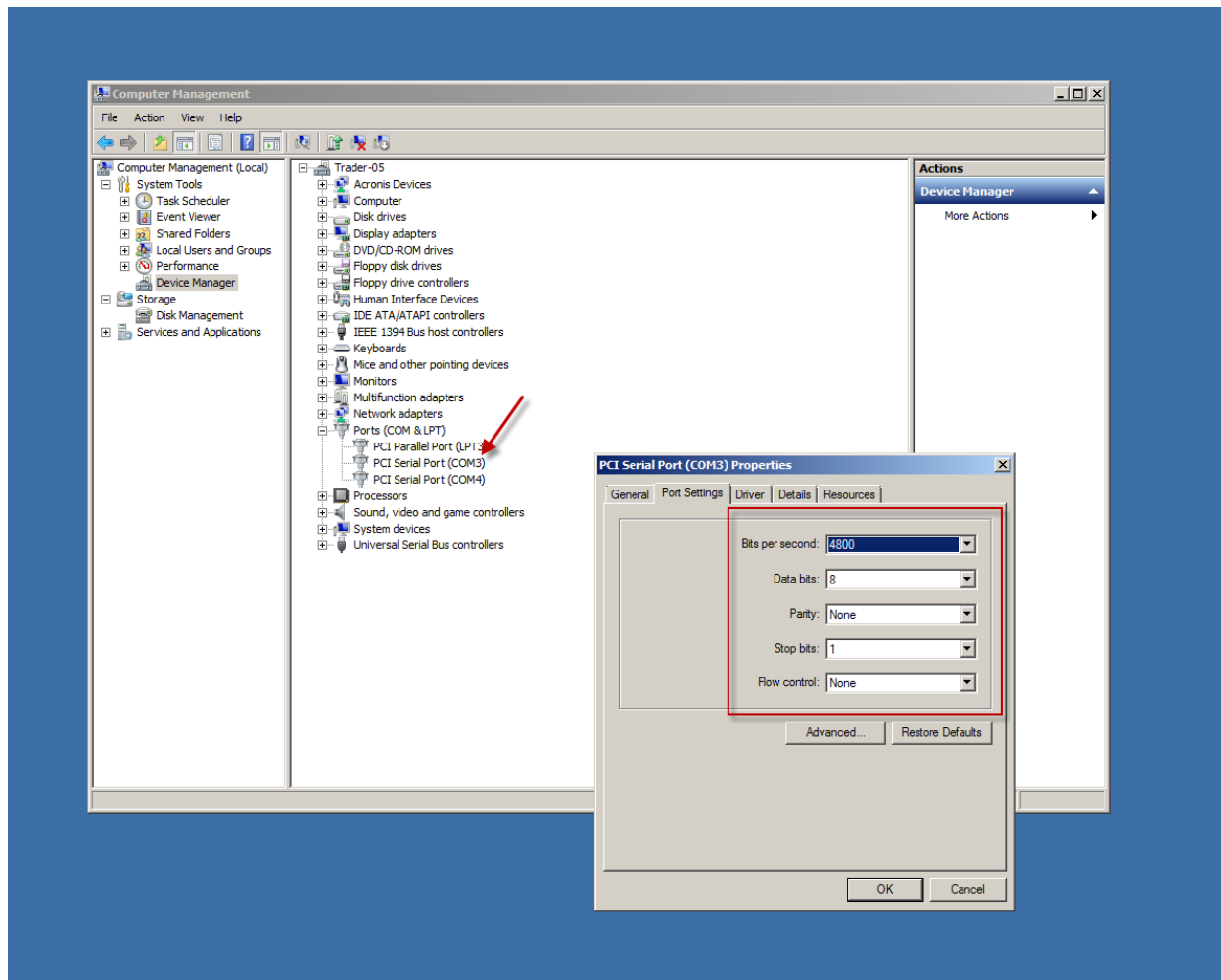
# GPSsimcable.com

## X-Plane Installation Instructions

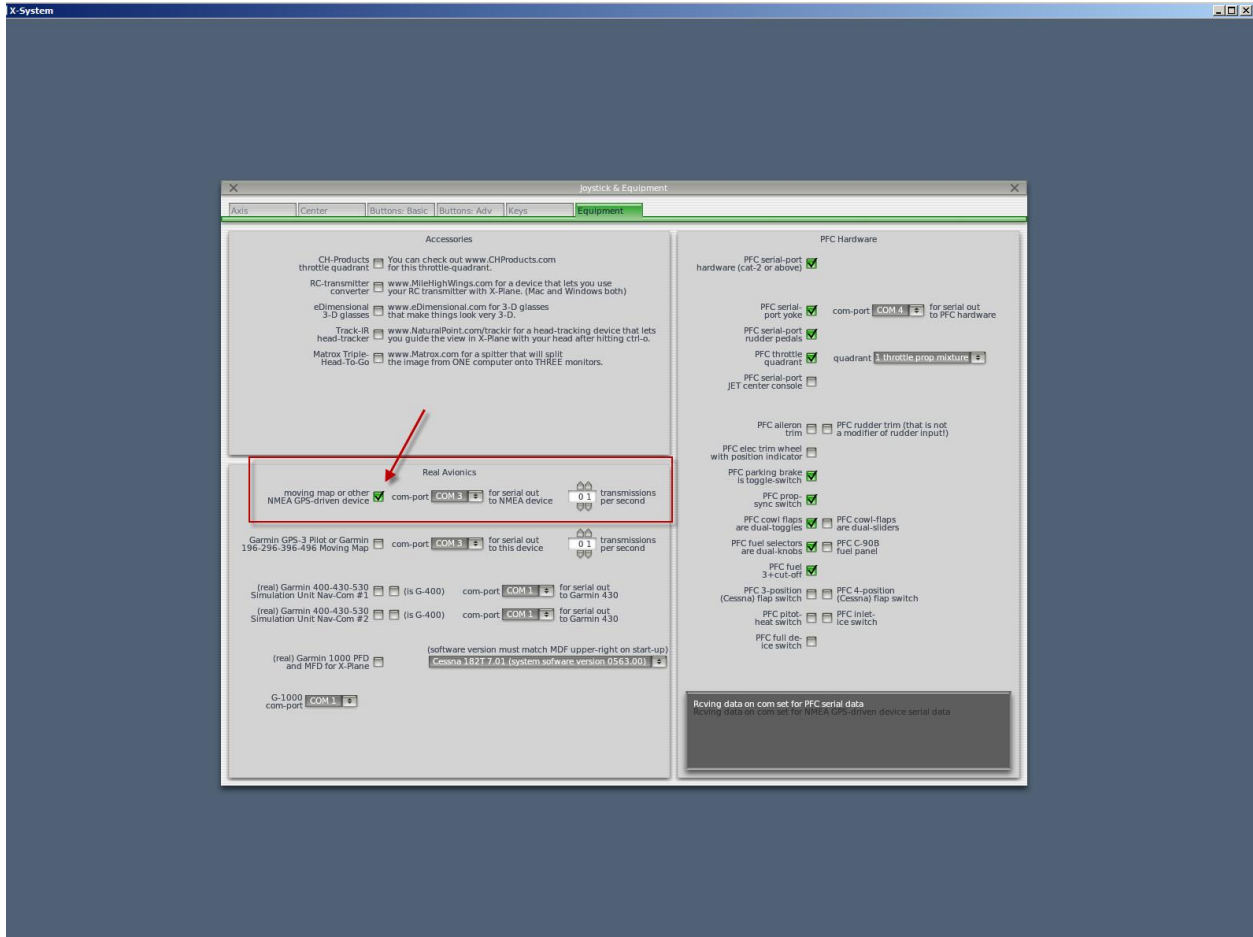
1. First step is to install the free GPS CABLE app from the iTunes store.



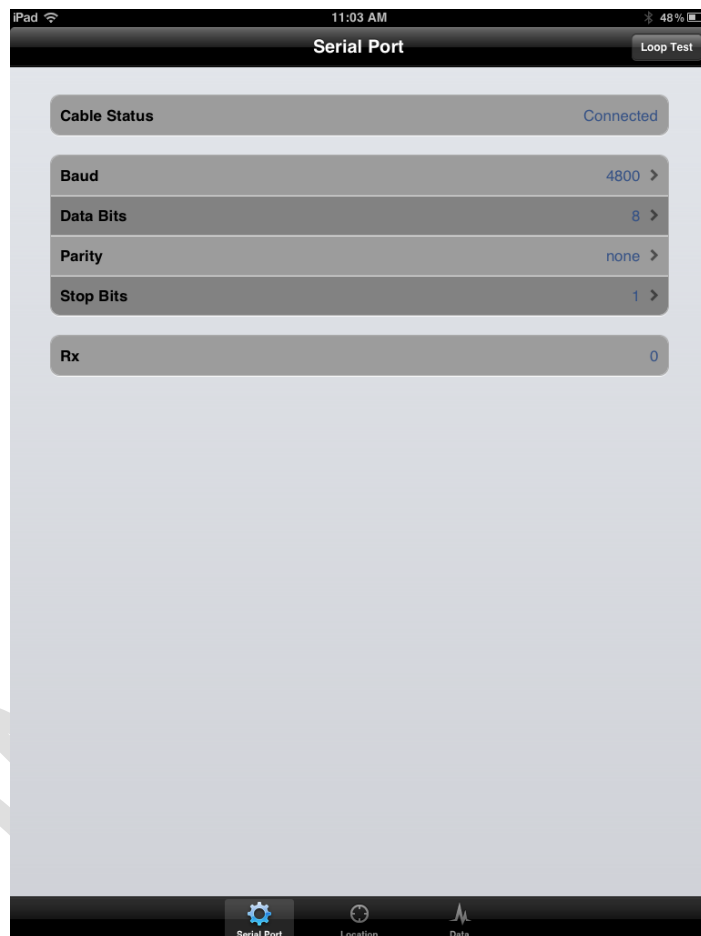
2. Confirm settings of your serial port on your computer by going to device manager and select the port that you will be connecting the GPS cable to. Make sure the settings are set to 4800, 8, None, 1, None.



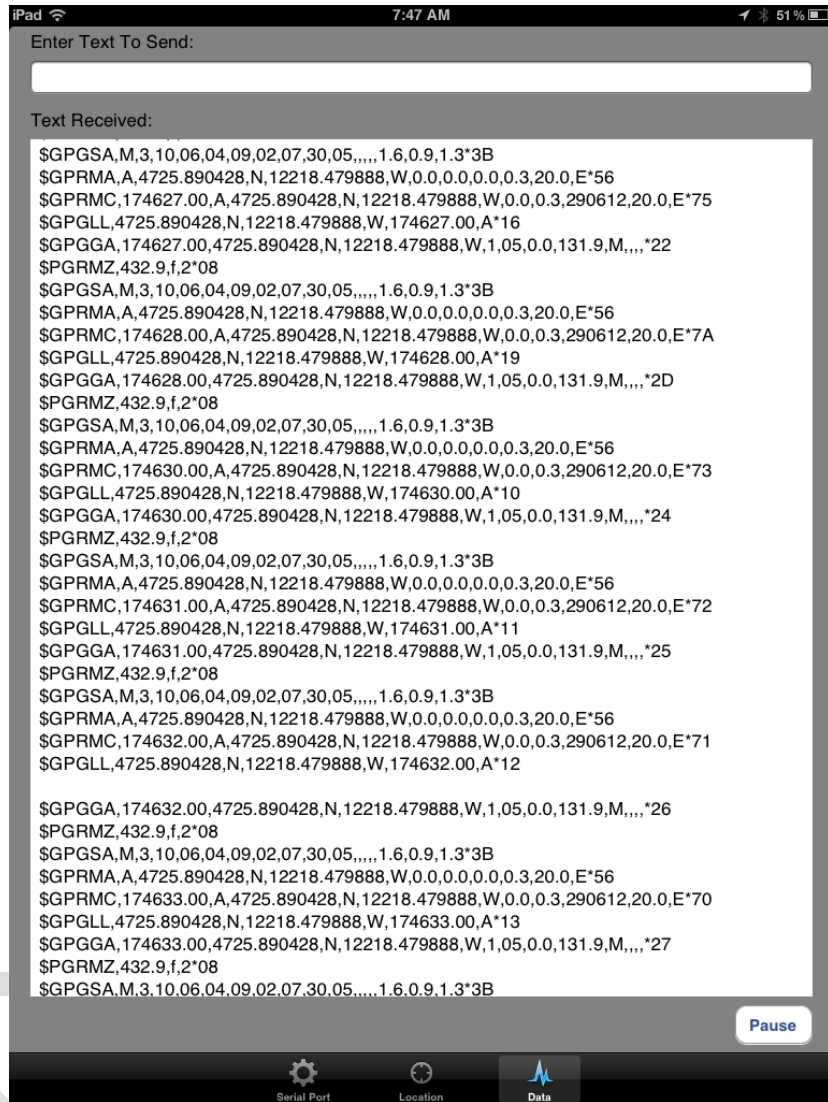
3. Start X-Plane and check NMEA GPS driven device and set the com port to the one you assigned at the Windows 7 device manager.



4. Connect the DB9 F to F null modem adapter to your serial port on your computer and then connect the GPSSimcable to the null modem adapter.
5. Connect the GPSSimcable to your IPAD
6. Start the GPS CABLE application on your IPAD and configure your application with the following settings.



7. Start X-Plane 9 or 10 flight simulator program and select data on the GPS CABLE application on the IPAD to confirm GPS data streaming to the IPAD. Select Location and you will see geo referenced location of your aircraft on Google maps.



8. Start your favorite mapping application and enjoy

9. If you do not see any data confirm you are using a true null modem adapter and not a gender changer adapter.

CONFIDENTIAL